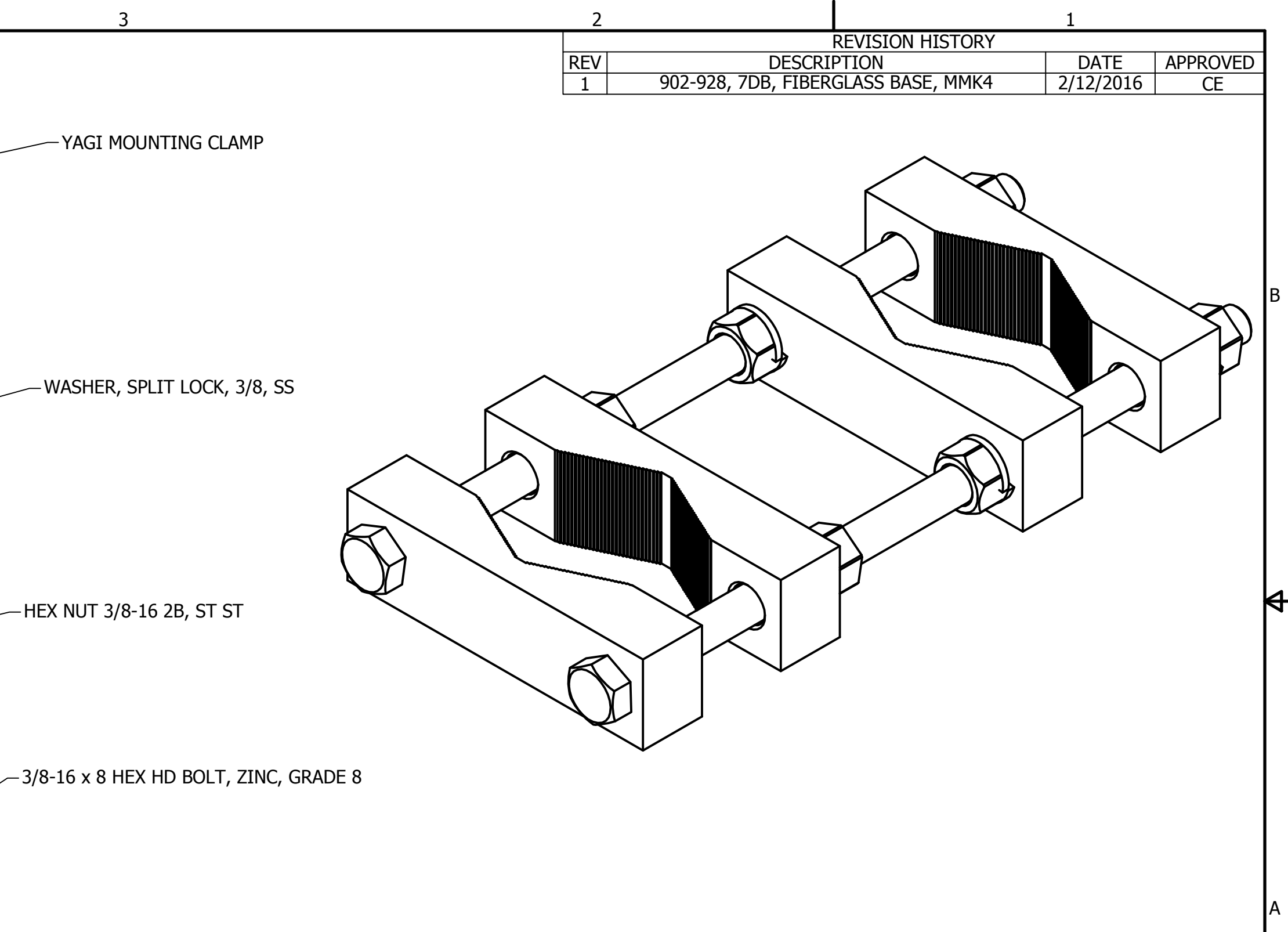
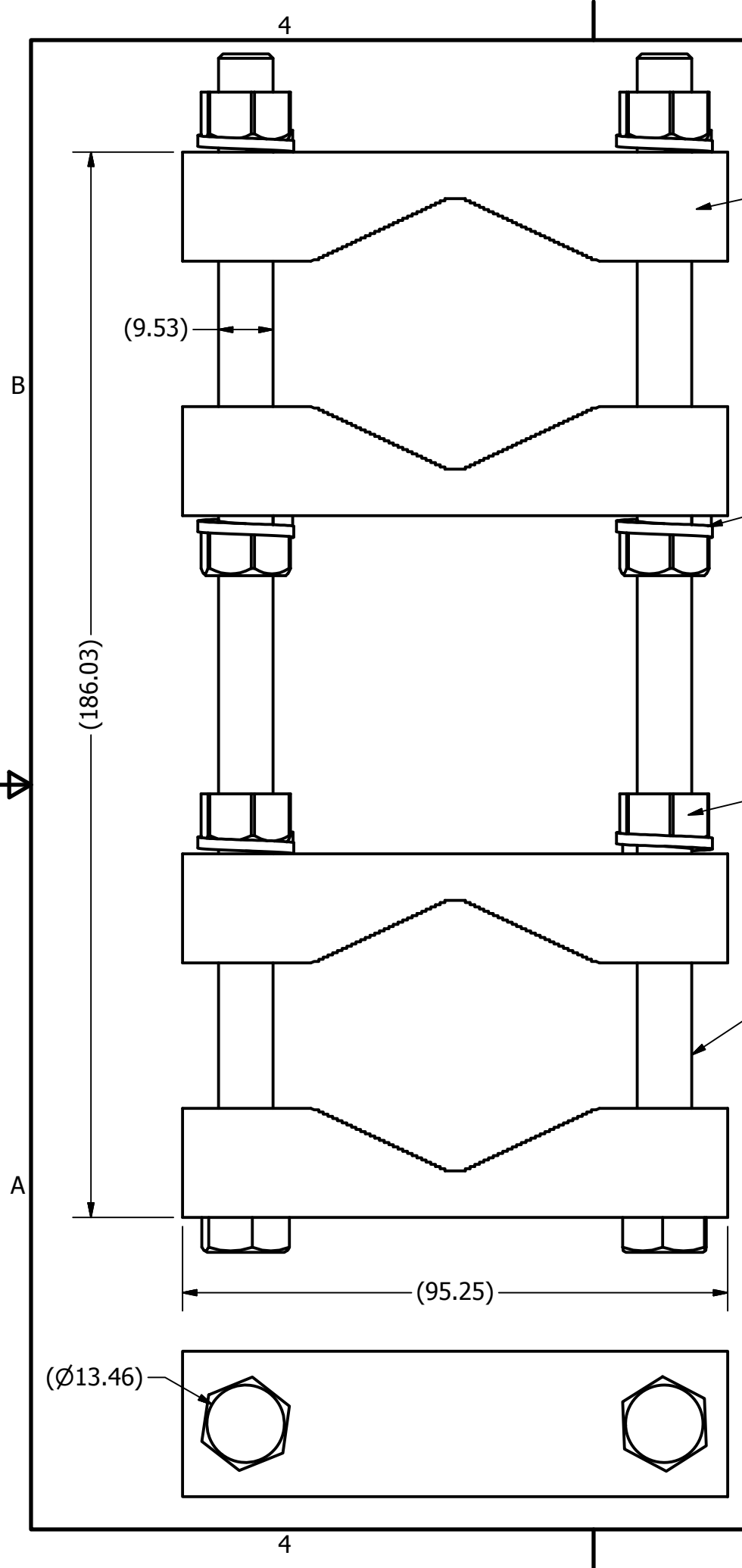


REVISION HISTORY			
REV	DESCRIPTION	DATE	APPROVED
1	902-928, 7DB, FIBERGLASS BASE, MMK4	2/12/2016	CE

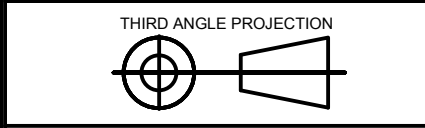


SUPPLIER PRINT ACCEPTANCE:

Accept drawing/specification. No changes needed:  
 This part is RoHS compliant  
 This part is REACH compliant  
 Accept drawing/specification. Notes/Mark-ups added  
 Cannot accept drawing/spec. Notes/Mark-ups added  
Supplier Projected Outgoing Quality:  
SIGMA LEVEL : \_\_\_\_\_ or PPM: \_\_\_\_\_  
Signature \_\_\_\_\_ Date: \_\_\_\_\_

UNLESS OTHERWISE SPECIFIED DIMENSIONS ARE IN MILLIMETERS

FOR TOLERANCES NOT SPECIFIED USE:  
[X mm ± 3 mm] [X.X mm ± .3 mm]  
[X.XX mm ± .13 mm] ANGULAR ± 1°



**PCTEL PROPRIETARY DATA**

THE INFORMATION AND/OR DRAWINGS CONTAINED IN THIS DOCUMENT IS CONFIDENTIAL AND PROPRIETARY TO PCTEL, INC. AND MAY NOT BE USED, REPRODUCED, IN WHOLE OR IN PART, OR MODIFIED IN ANY WAY WITHOUT THE EXPRESS WRITTEN PERMISSION OF AN AUTHORIZED REPRESENTATIVE OF PCTEL, INC.

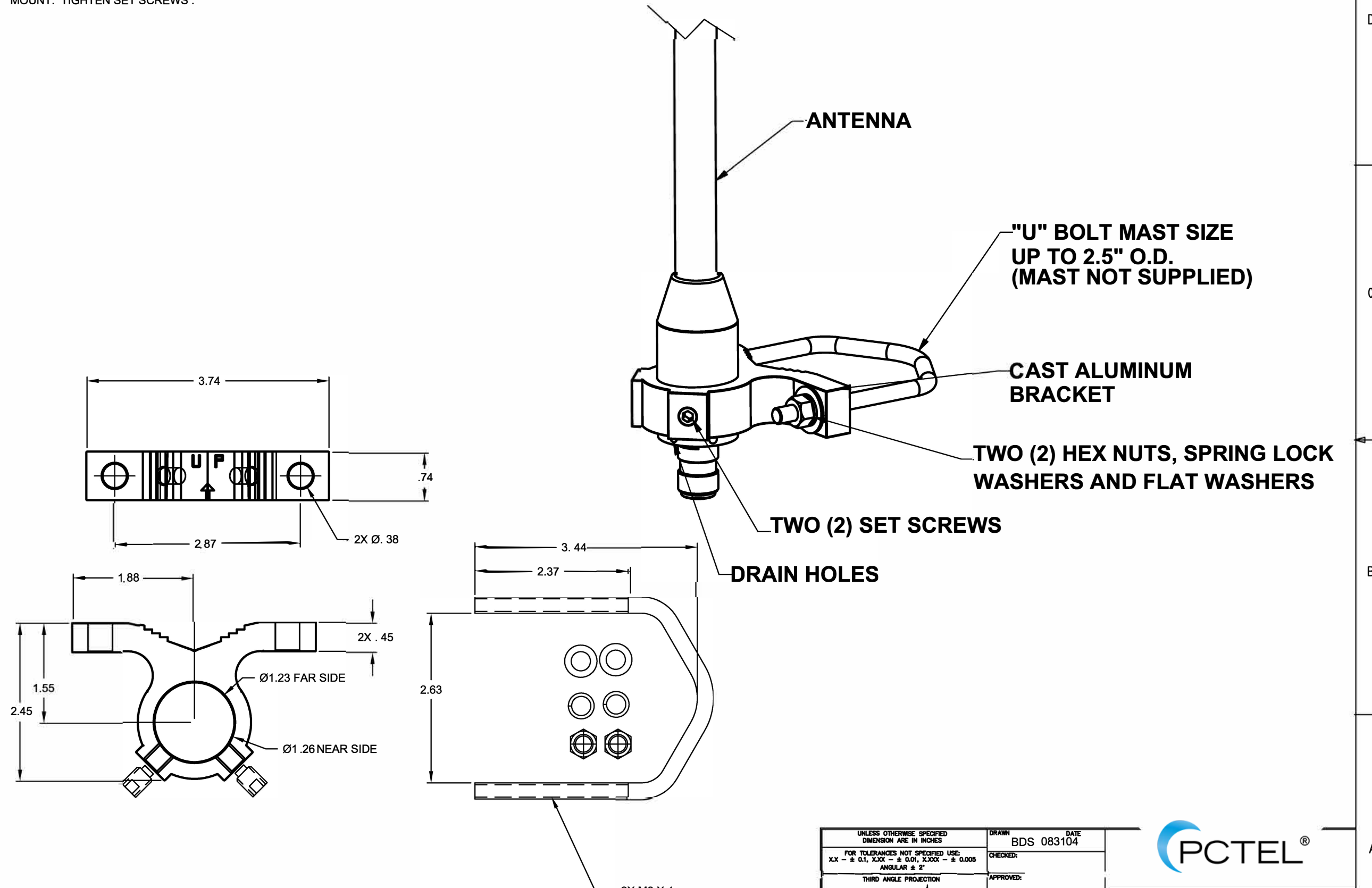
DRAWN: CE DATE: 8/5/2016  
CHECKED: IP DATE: 8/8/2016  
MATERIAL: SEE COMP. PRINTS  
FINISH: SEE COMP. PRINTS

		PCTEL, INC. 471 BRIGHTON DRIVE BLOOMINGDALE, IL 60108 PH. 630-372-6800 FAX. 630-372-8077	
		DESCRIPTION: HD BASE STATION MT	
DRAWING NO.: ODD_MMK4		SIZE: B	SCALE: 1:1
		SHEET: 1 OF 1	

NOTES:

1. TO ASSEMBLE, SLIDE ANTENNA FROM CAP SIDE THROUGH LARGE END OF TAPER HOLE UNTIL ANTENNA IS SECURELY SEATED INTO MOUNT. TIGHTEN SET SCREWS.

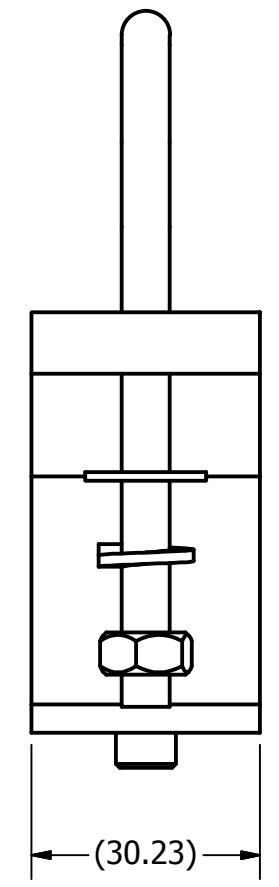
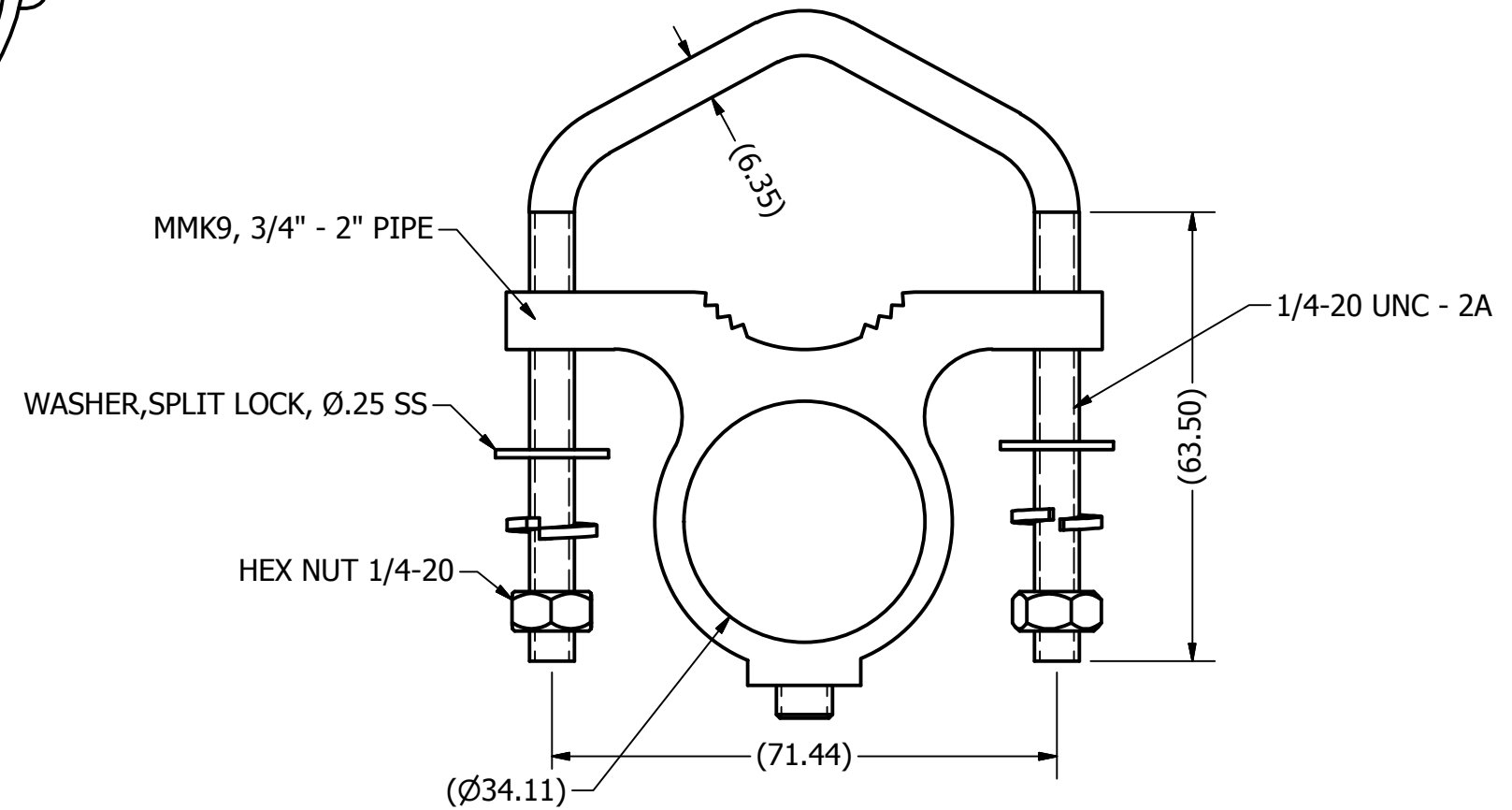
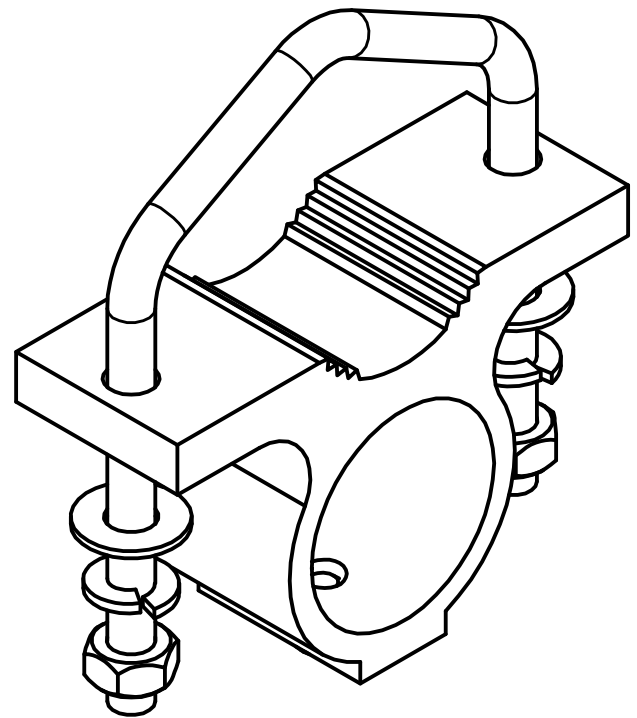
REVISIONS			
REV	DESCRIPTION	DRAWN/APPROVED/DATE	LOC
A	CHNG HRDWR TO METRIC	BDS/BDS/012005	


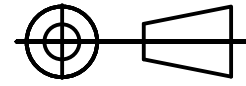


UNLESS OTHERWISE SPECIFIED DIMENSION ARE IN INCHES	DRAWN BDS	DATE 083104
FOR TOLERANCES NOT SPECIFIED USE: XX - ± 0.1, X.XX - ± 0.01, X.XXX - ± 0.005 ANGULAR ± 2°	CHECKED:	
THIRD ANGLE PROJECTION	APPROVED:	
PROPRIETARY DATA	MATERIAL:	
THE INFORMATION CONTAINED IN THIS DOCUMENT IS OF A PROPRIETARY NATURE. IT MAY NOT BE USED OR REPRODUCED WITHOUT EXPRESS WRITTEN PERMISSION OF MAXRAD, INC., HANOVER PARK, IL 60133	FINISH:	

DESCRIPTION OUTLINE DIMENSIONAL DRAWING, OMNI MOUNT, 1.25 TAPERED BASE		
DRAWING NO. ODD_MMK8A		
SIZE C	SCALE NONE	SHEET

REVISION HISTORY			
REV	DESCRIPTION	DATE	APPROVED
1	MFB (ALUMINUM SLEEVE BASE) MT BRKT	2/12/2016	CE

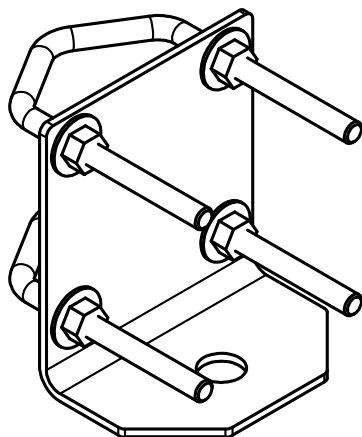
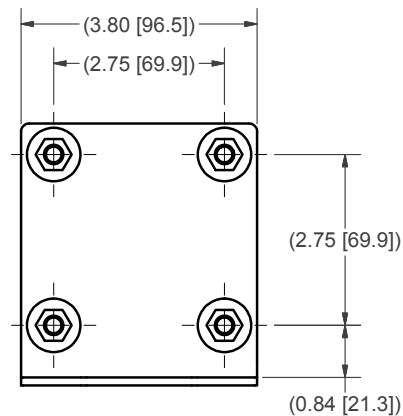
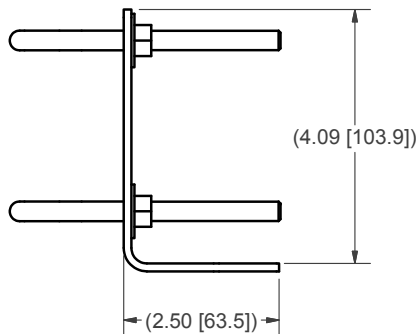
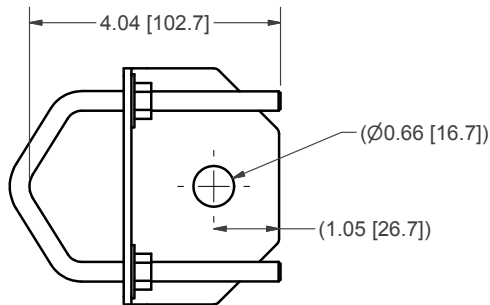


SUPPLIER PRINT ACCEPTANCE: <input type="checkbox"/> Accept drawing/specification: No changes needed: <input type="checkbox"/> This part is RoHS compliant <input type="checkbox"/> This part is REACH compliant <input type="checkbox"/> Accept drawing/specification. Notes/Mark-ups added <input type="checkbox"/> Cannot accept drawing/spec. Notes/Mark-ups added Supplier Projected Outgoing Quality: SIGMA LEVEL : _____ or PPM: _____ Signature _____ Date: _____	UNLESS OTHERWISE SPECIFIED DIMENSIONS ARE IN MILLIMETERS FOR TOLERANCES NOT SPECIFIED USE: [X mm ± 3 mm]      [X.X mm ± .3 mm] [X.XX mm ± .13 mm]      ANGULAR± 1°	DRAWN      DATE <b>CE</b> <b>8/5/2016</b> CHECKED      DATE <b>IP</b> <b>8/8/2016</b>	 PCTEL, INC. 471 BRIGHTON DRIVE BLOOMINGDALE, IL 60108 PH. 630-372-6800 FAX. 630-372-8077	
	THIRD ANGLE PROJECTION 	MATERIAL: <b>SEE COMP. PRINTS</b> FINISH: <b>SEE COMP. PRINTS</b>		DESCRIPTION <b>MFB (ALUMINUM SLEEVE BASE) MT BRKT</b>
	PCTEL PROPRIETARY DATA THE INFORMATION AND/OR DRAWINGS CONTAINED IN THIS DOCUMENT IS CONFIDENTIAL AND PROPRIETARY TO PCTEL, INC. AND MAY NOT BE USED, REPRODUCED, IN WHOLE OR IN PART, OR MODIFIED IN ANY WAY WITHOUT THE EXPRESS WRITTEN PERMISSION OF AN AUTHORIZED REPRESENTATIVE OF PCTEL, INC.			DRAWING NO. <b>ODD_MMK9</b>
	SIZE <b>B</b> SCALE <b>1:1</b> SHEET <b>1 OF 1</b>			

NOTES: UNLESS OTHERWISE SPECIFIED

1. INTERPRET DRAWING PER ANSI/ASME Y14.5
2. MATERIAL: SEE DETAIL DRAWINGS.
3. FINISH: SEE DETAIL DRAWINGS.  
PARTS SHALL BE CLEAN AND FREE OF FOREIGN MATTER.  
ALL DIMENSIONS APPLY AFTER PLATING.
4. ALL MATERIALS SHALL BE ROHS COMPLIANT.
5. PARTS SHALL BE PACKAGED TO PREVENT DAMAGE IN SHIPMENT AND HANDLING.
6. DIMENSIONS IN PARENTHESIS ARE FOR REFERENCE ONLY AND NO TOLERANCE IS IMPLIED.
7. SUPPLIER SHALL REVIEW AND COMPLETE AND SIGN SUPPLIER INPUT/ PRINT ACCEPTANCE BLOCK.

REVISION HISTORY			
REV	DESCRIPTION	DATE	APPROVED
A	MOUNT KIT, BASE STATION, U-BOLTS, 2.4" MAX	07NOV13	JD

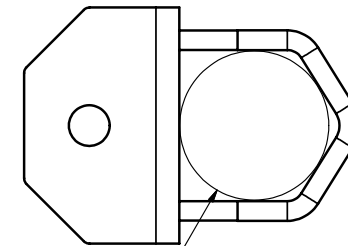
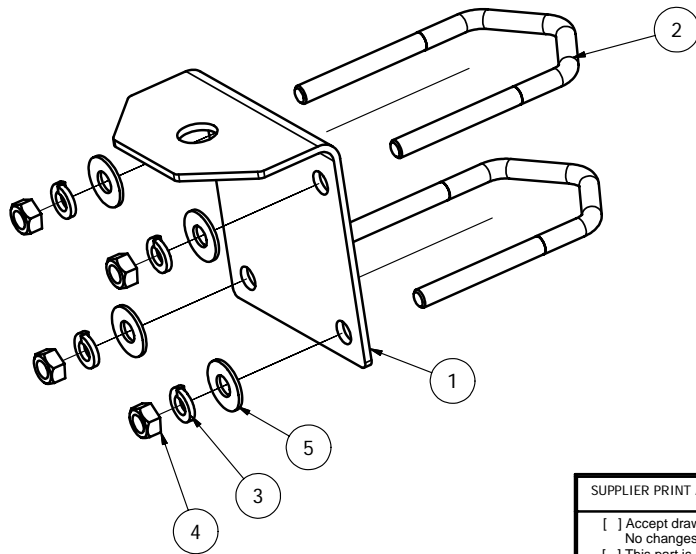


<b>SUPPLIER PRINT ACCEPTANCE:</b> <input type="checkbox"/> Accept drawing/specification: No changes needed: <input type="checkbox"/> This part is RoHS compliant <input type="checkbox"/> This part is REACH compliant <input type="checkbox"/> Accept drawing/specification. Notes/Mark-ups added <input type="checkbox"/> Cannot accept drawing/spec. Notes/Mark-ups added Supplier Projected Outgoing Quality: SIGMA LEVEL : _____ or PPM: _____ Signature _____ Date: _____	UNLESS OTHERWISE SPECIFIED DIMENSIONS ARE IN INCHES [DIMENSIONS ARE IN mm]	DRAWN: JD DATE: 11/7/2013 CHECKED: _____ DATE: _____ APPROVED: _____ DATE: _____	PCTEL, INC. ANTENNA PRODUCTS 471 BRIGHTON DRIVE BLOOMINGDALE, IL 60108 PH. 630-372-6800 FAX. 630-372-8077	
	FOR TOLERANCES NOT SPECIFIED USE: .XX in ± .01 in, .XXX in ± .01 in, .XXX in ± .005 in [X mm ± 3 mm], [X.X mm ± .3 mm], [X.XX mm ± .13 mm] ANGULAR ± 1°, FRACTIONAL ± 1/64	MATERIAL: SEE COMPONENT PRINTS FINISH: SEE COMPONENT PRINTS		DESCRIPTION: MOUNT KIT, BASE STATION, U-BOLTS, 2.4" MAX
	THIRD ANGLE PROJECTION 	PROPRIETARY DATA THE INFORMATION CONTAINED IN THIS DOCUMENT IS OF A PROPRIETARY NATURE AND MAY NOT BE USED OR REPRODUCED WITHOUT THE EXPRESSED WRITTEN PERMISSION OF PCTEL INC., BLOOMINGDALE, IL 60108		DRAWING NO. ODD_BAM1009
	SIZE B SCALE N/A SHEET 1 OF 1			

NOTES: UNLESS OTHERWISE SPECIFIED

1. PARTS MUST BE CLEAN AND FREE OF OIL, DIRT OR OTHER CONTAMINANTS.
2. ALL MATERIALS AND PROCESSES MUST BE ROHS COMPLIANT
3. MATERIAL AND FINISH:  
BRACKET: ALUMINUM, HARD COAT ANODIZED, BLACK  
HARDWARE: STEEL, NI ZN TRIVALENT PLATED
4. ASSEMBLE MOUNT HARDWARE FOR INSTALLATION AS SHOWN
5. HARDWARE TORQUE RECOMMENDATION:  
5/16-18: 132 IN-LB
6. PARTS SHALL BE PACKAGED TO PREVENT DAMAGE IN SHIPMENT AND HANDLING. DO NOT PREASSEMBLE THE MOUNT.
7. AN [X] DIM IDENTIFIES A KEY CHARACTERISTIC, REQUIRES INSPECTION AND MAY REQUIRE Cpk STUDY AS OUTLINED IN PCTEL CQR (COMPONENT QUALIFICATION REQUIREMENTS) RECORD. WHERE NO CQR EXISTS, A COMPLETE 1ST ARTICLE LAYOUT SHALL BE SUBMITTED WITH INITIAL ORDER. A (REF) DIMENSION IS FOR INFORMATION PURPOSES ONLY AND NO TOLERANCE IS IMPLIED.
8. SUPPLIER SHALL REVIEW, COMPLETE AND SIGN SUPPLIER PRINT ACCEPTANCE BLOCK

REVISION HISTORY			
REV	DESCRIPTION	DATE	APPROVED
A	RELEASE TO PRODUCTION C06684	28APR11	JMP



PIPE RANGE  
Ø1.63-Ø2.40

PARTS LIST			
ITEM	QTY	PART NUMBER	DESCRIPTION
1	1	P03326	BRACKET, L-MOUNT, OMNI MFB
2	2	P01910	U-BOLT, 5/16-18 UNC-2A, MED CARBON STEEL, NI ZN TRI
3	4	P00789	WASHER, SPLIT LOCK, 5/16, STEEL GRADE 2, NI ZN TRIVALENT
4	4	P00791	NUT, 5/16-18, 1/2" HEX, 17/64" THICK, STEEL GRADE 2, NI ZN TRIVALENT
5	4	P00780	WASHER, 5/16, FLAT, STEEL GRADE 2, NI ZN TRIVALENT

SUPPLIER PRINT ACCEPTANCE:

Accept drawing/specification:  
No changes needed:

This part is RoHS compliant

This part is REACH compliant

Accept drawing/specification.  
Notes/Mark-ups added

Cannot accept drawing/spec.  
Notes/Mark-ups added

Supplier Projected Outgoing Quality:

SIGMA LEVEL : \_\_\_\_\_ or PPM: \_\_\_\_\_

Signature: \_\_\_\_\_ Date: \_\_\_\_\_

UNLESS OTHERWISE SPECIFIED  
DIMENSIONS ARE IN INCHES

FOR TOLERANCES NOT SPECIFIED USE:  
X.X in ± .1 in, X.XX in ± .01 in, X.XXX in ± .005 in  
ANGULAR ± 1°; FRACTIONAL ± 1/64

THIRD ANGLE PROJECTION

PROPRIETARY DATA  
THE INFORMATION CONTAINED IN THIS  
DOCUMENT IS OF A PROPRIETARY NATURE  
AND MAY NOT BE USED OR REPRODUCED  
WITHOUT THE EXPRESSED WRITTEN PERMISSION  
OF PCTEL INC., BLOOMINGDALE, IL 60108

DRAWN: **JMP** DATE: **4/28/2011**

CHECKED: \_\_\_\_\_ DATE: \_\_\_\_\_

APPROVED: \_\_\_\_\_ DATE: \_\_\_\_\_

MATERIAL: **SEE NOTES**

FINISH: **SEE NOTES**

**PCTEL**  
simplifying mobility

PCTEL, INC.  
BROADBAND TECHNOLOGY GROUP  
ANTENNA PRODUCTS  
471 BRIGHTON DRIVE  
BLOOMINGDALE, IL 60108  
PH. 630-372-6800  
FAX. 630-372-8077

DESCRIPTION: **MOUNT KIT, MFB OMNI, HCA L-BRACKET, U-BOLTS**

DRAWING NO.: **BAM1011-HCA**

SIZE: **B** SCALE: **NA** SHEET: **1 OF 1**